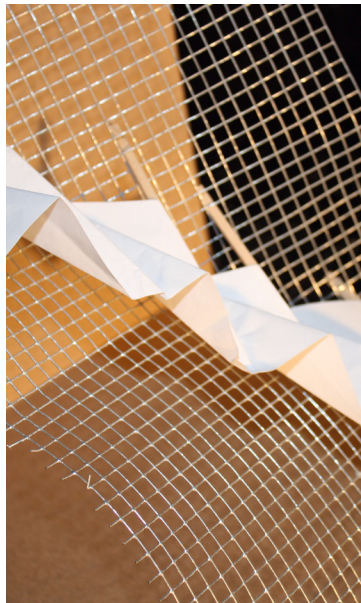
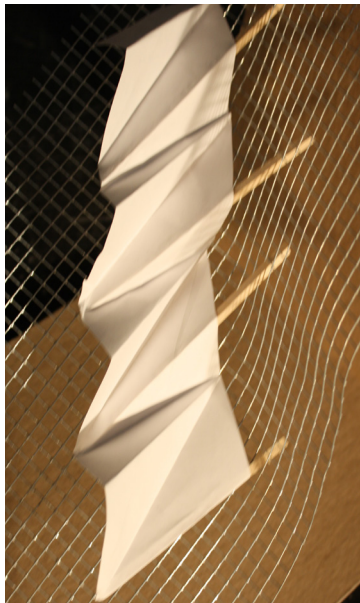
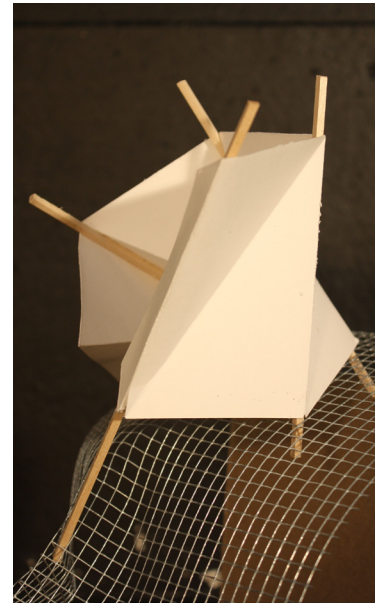
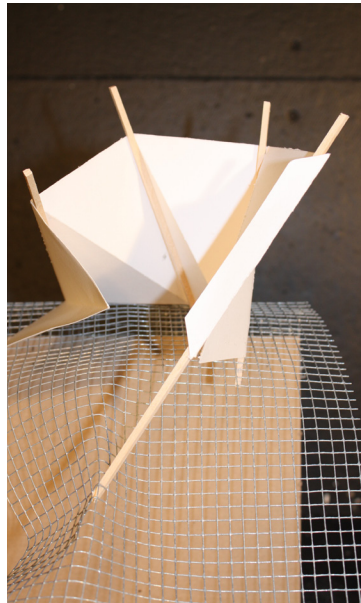
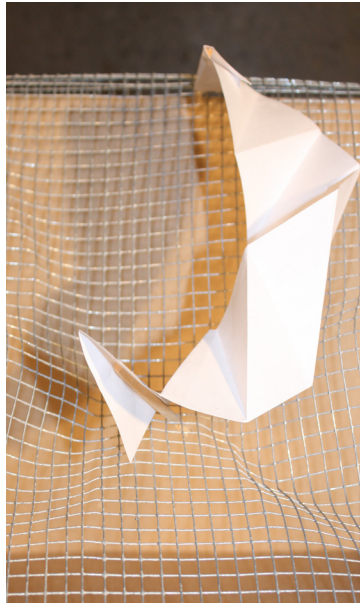
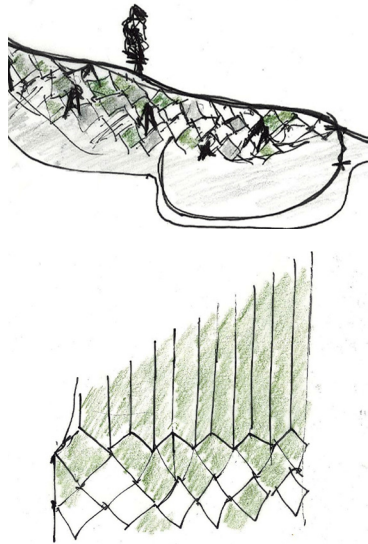


Paper Folding

The beauty and strength of folded paper was observed through origami exercises. These studies later contributed to schemes for hypothetical pavilions on a local hillside.



Paper Folding Exercise



Preliminary Sketches

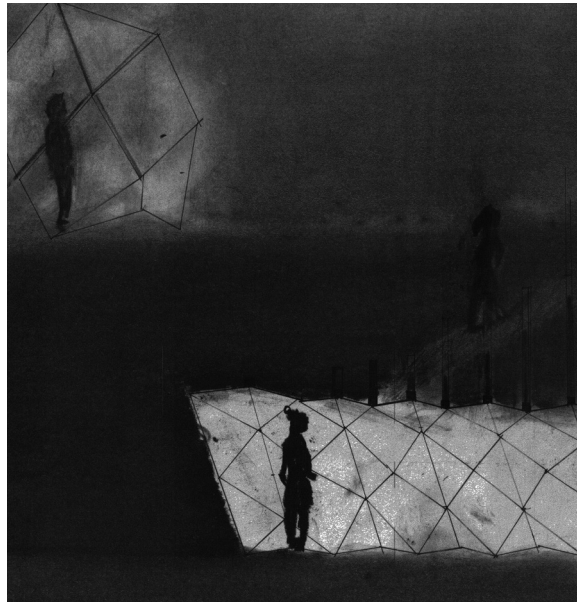


Preliminary Sketches

The understandings from the origami exercises led to studies of folded concrete for the hypothetical hillside pavilion. Furthermore, preliminary trace paper sketches led to experimentations in green roof aesthetics. The project worked to combine green roof aesthetics with folded concrete to create a unique and dynamic patterned surface that would integrate itself with the hillside.

Charcoal Sections

Not only was the communication between pavilion and hillside pivotal to the project's success but also the communication with neighboring student's pavilion designs. Charcoal sections began to more clearly depict the pavilion's relationship with the hillside as well as its relationship with other students' pavilions.



Charcoal Sections



Case Study 22



Precedent Study

The potential for structure to be related to site, culture, and environment was studied through a series of precedent works. The following shows Case Study 22 in Los Angeles and the study of its relation to its hillside site.

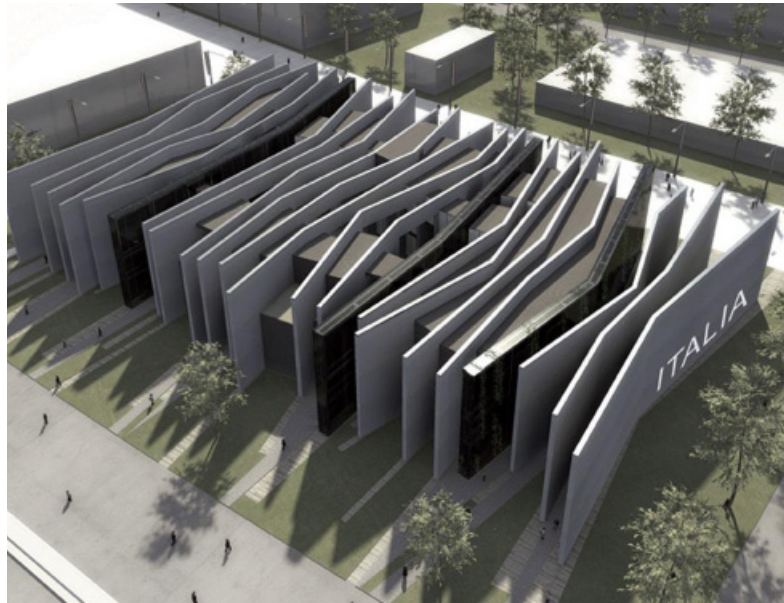
Precedent Study Site Overlay

Through a series of site overlays it was imagined how Case Study 22 might interact with the chosen site for the semester's final project. Through the exercise new potential was found in the site.

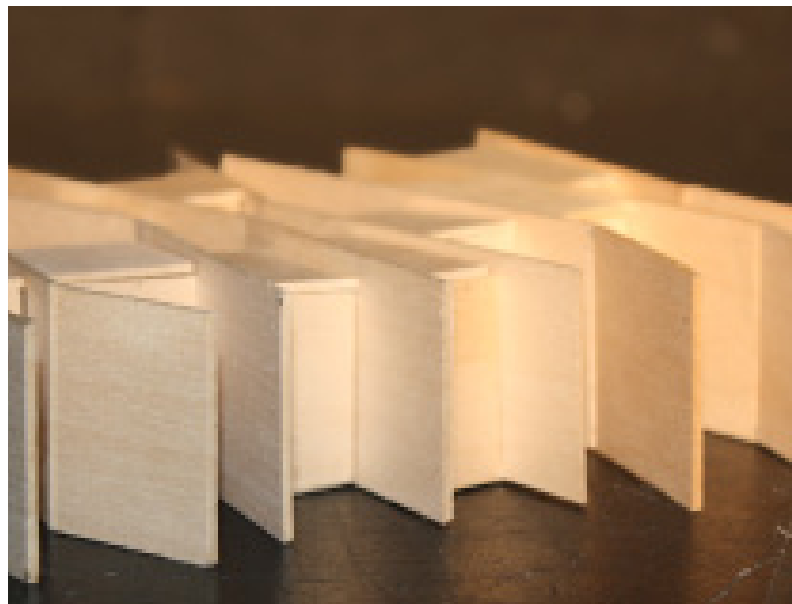
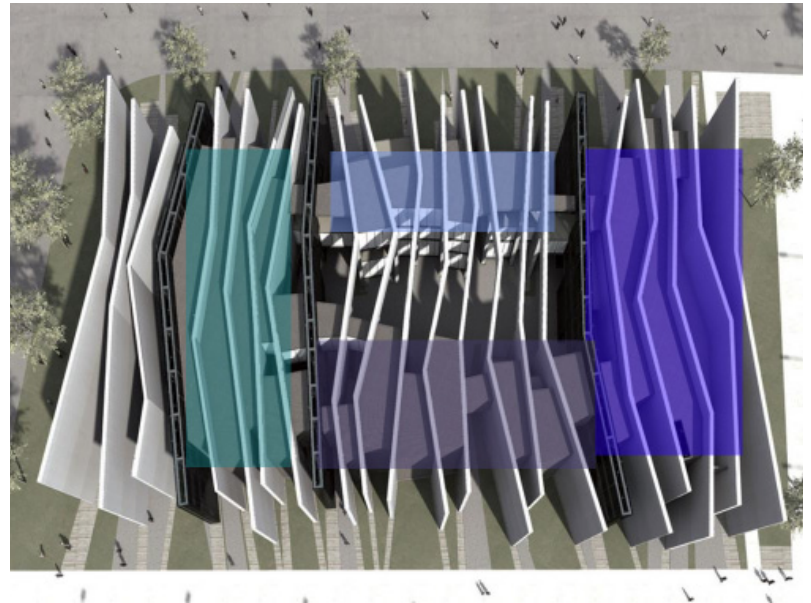


Columbus Site Overlay

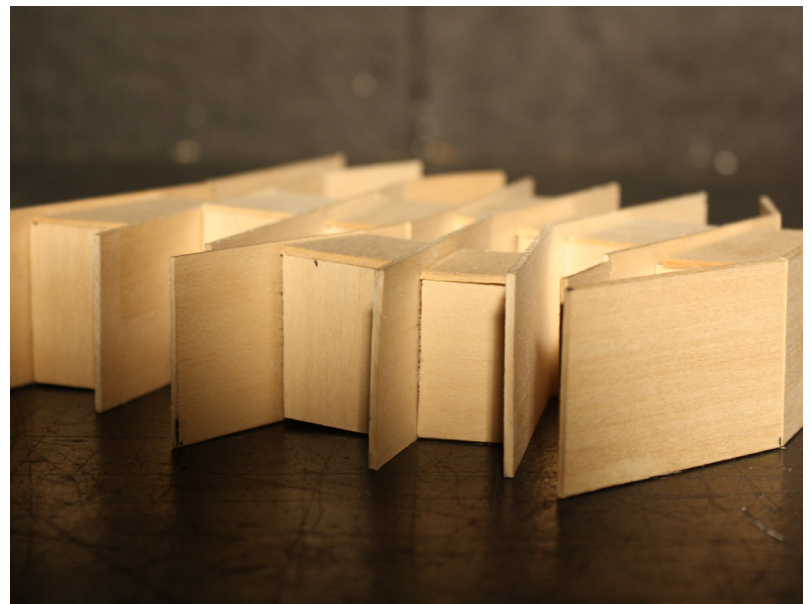


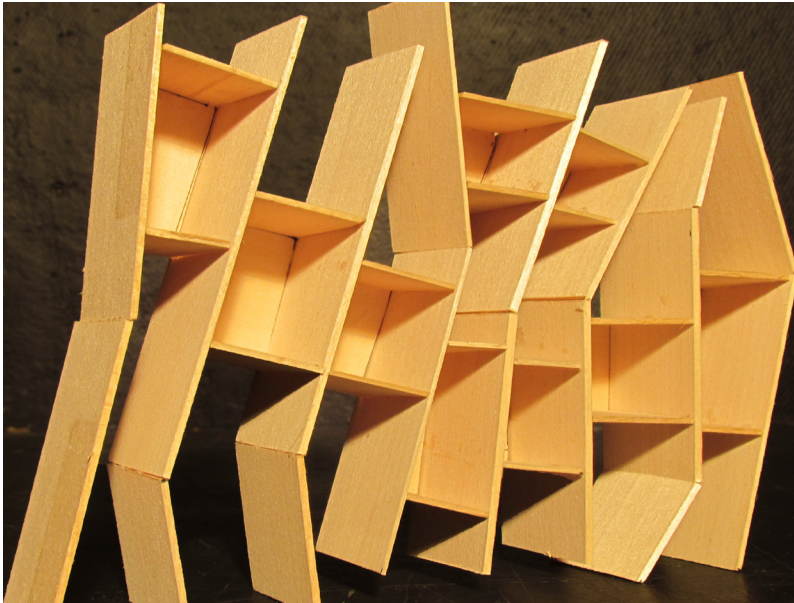


Observing repetition through precedent

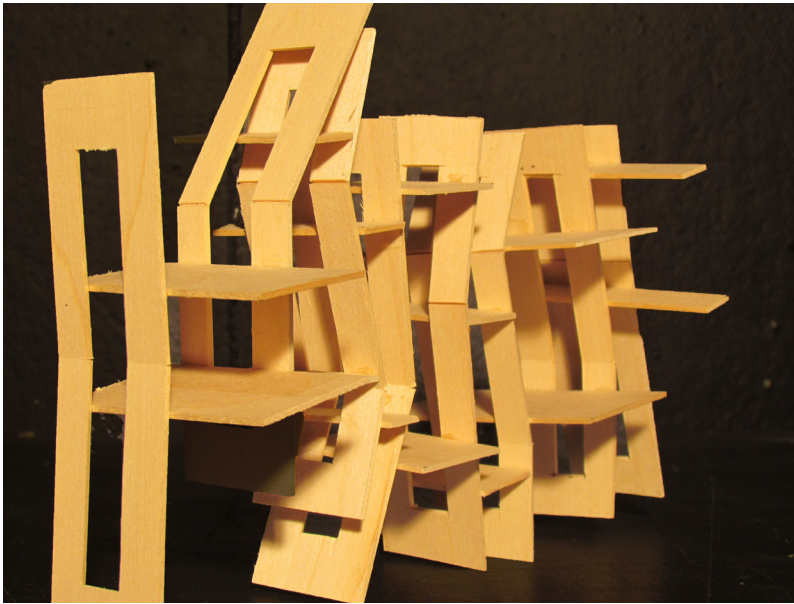
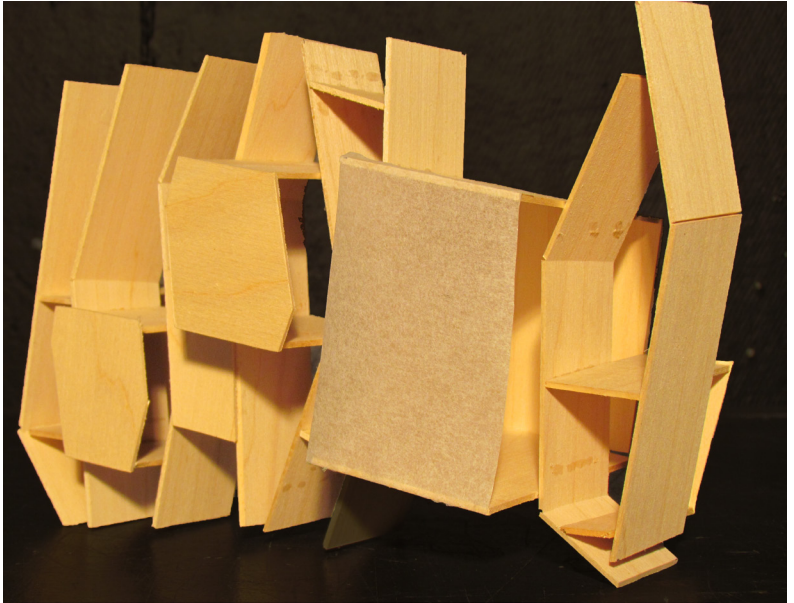


Precedent Models

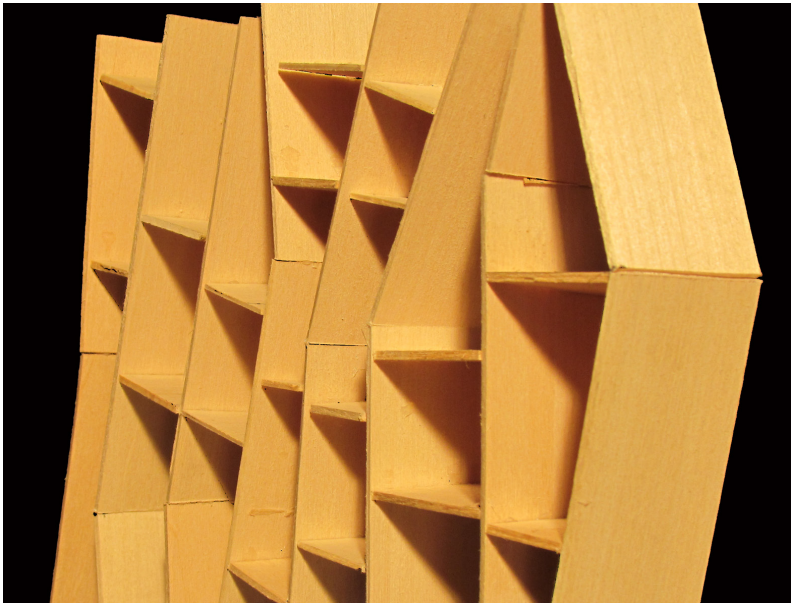




Altering the precedent

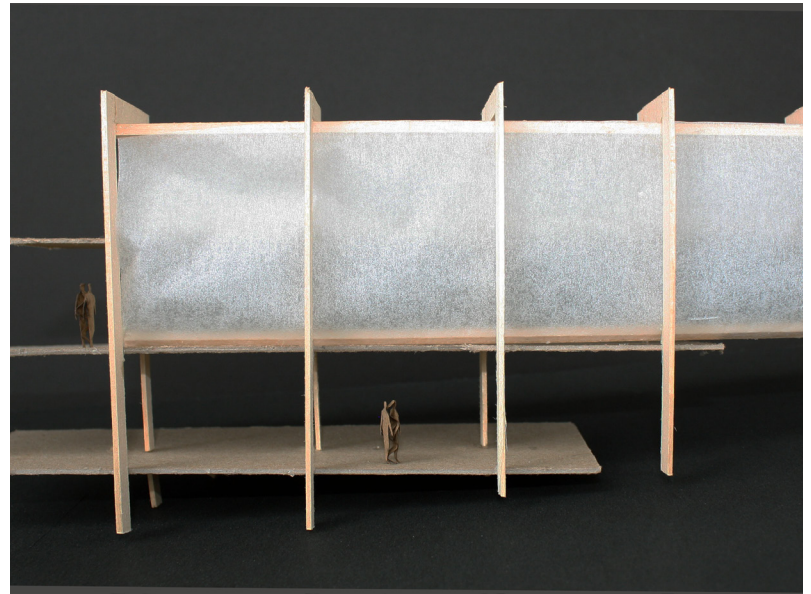


Altering the precedent

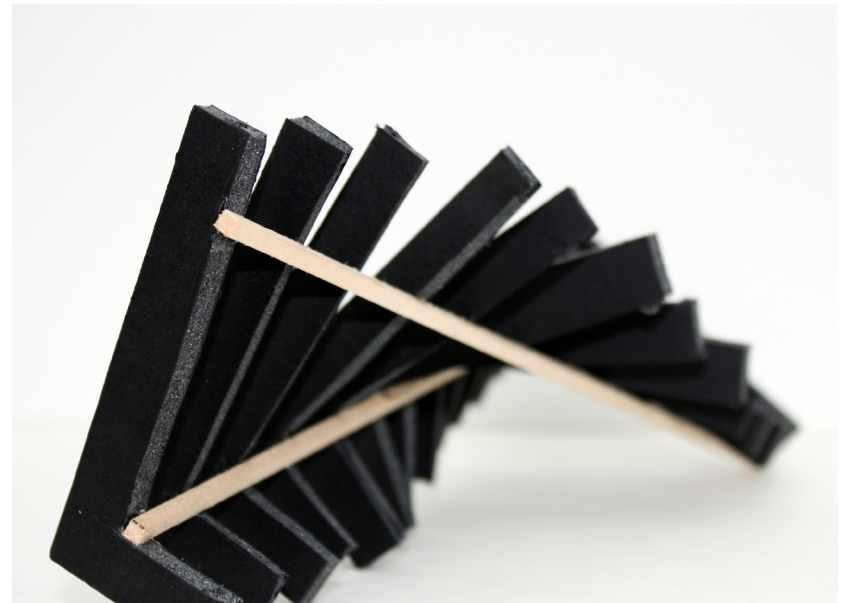


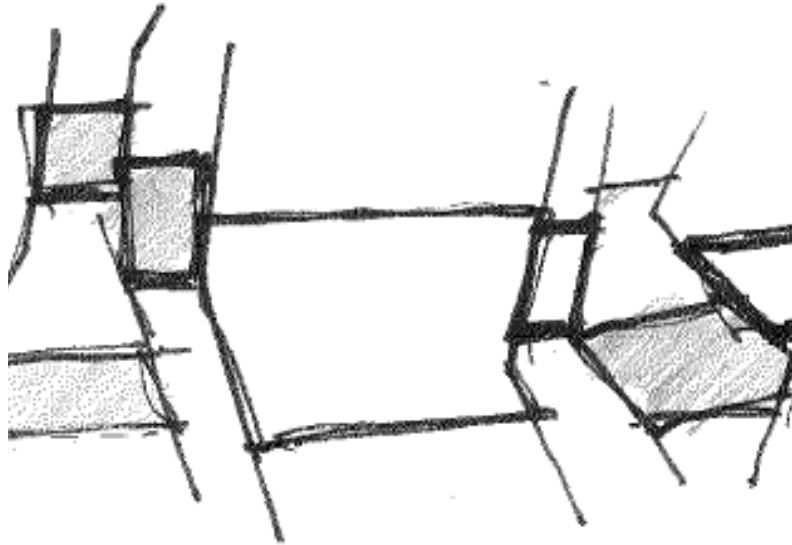


Further experimentations in repetition



Experiments in dynamic repetition

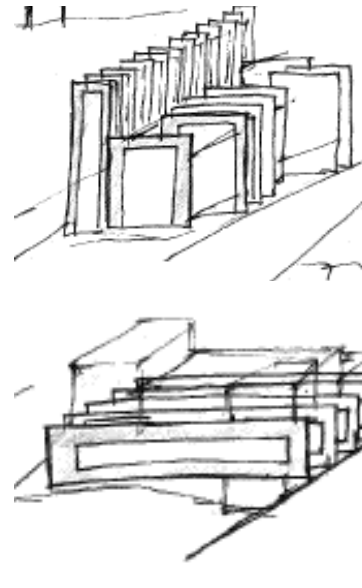




Concept Model

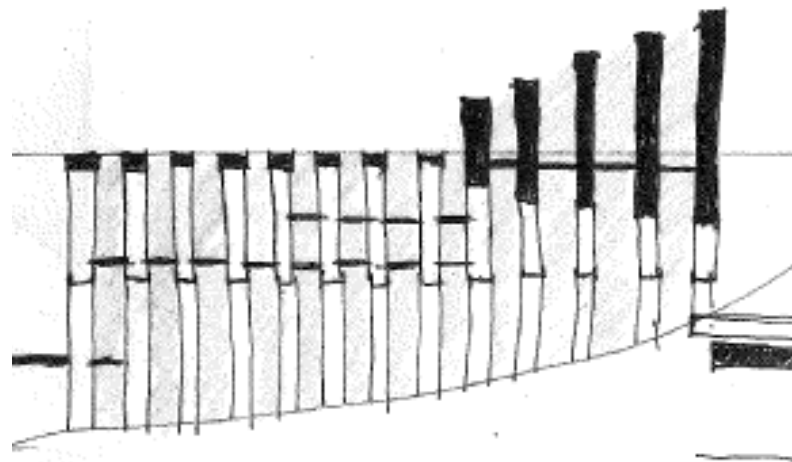
Preliminary Sketches

The early stages of the final design alternated between sketching and modeling. The understandings gained from these sketches accompany that of the models on the previous pages.

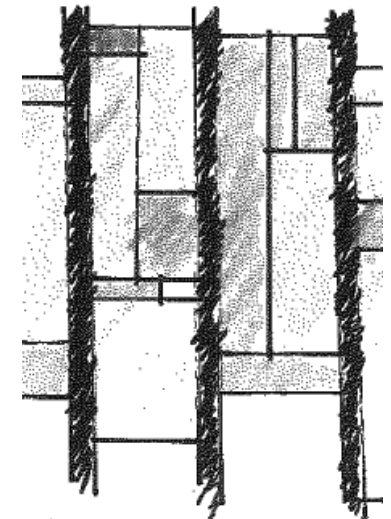


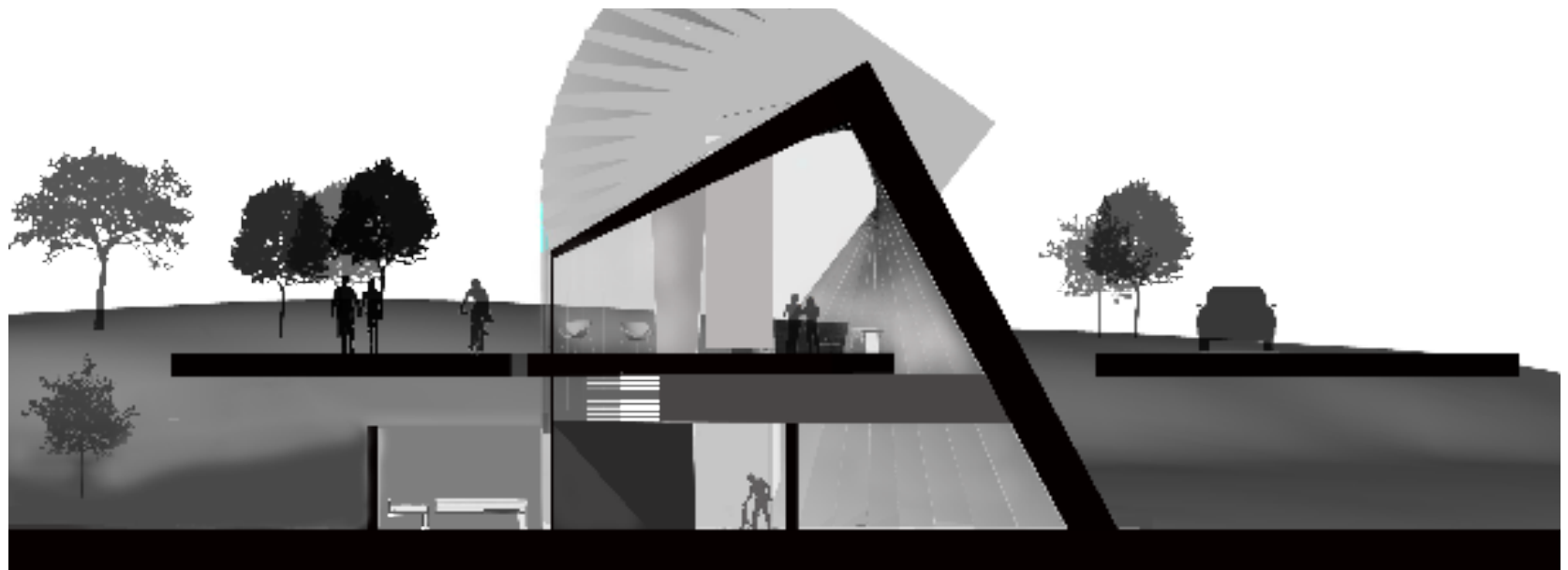
Preliminary Sketches

The semester final project was a proposal for a boating gallery and workshop which was to be located on a river bank in Columbus, Mississippi. As the project moved from the precedent studies to the final proposals the understandings gained from the earlier precedent studies were not lost. The precedent study of the Italian Pavilion in Shanghai led to an overarching theme of repetition in architectural design and furthermore, how that repetition is played out both across the exterior facade and interior spaces.

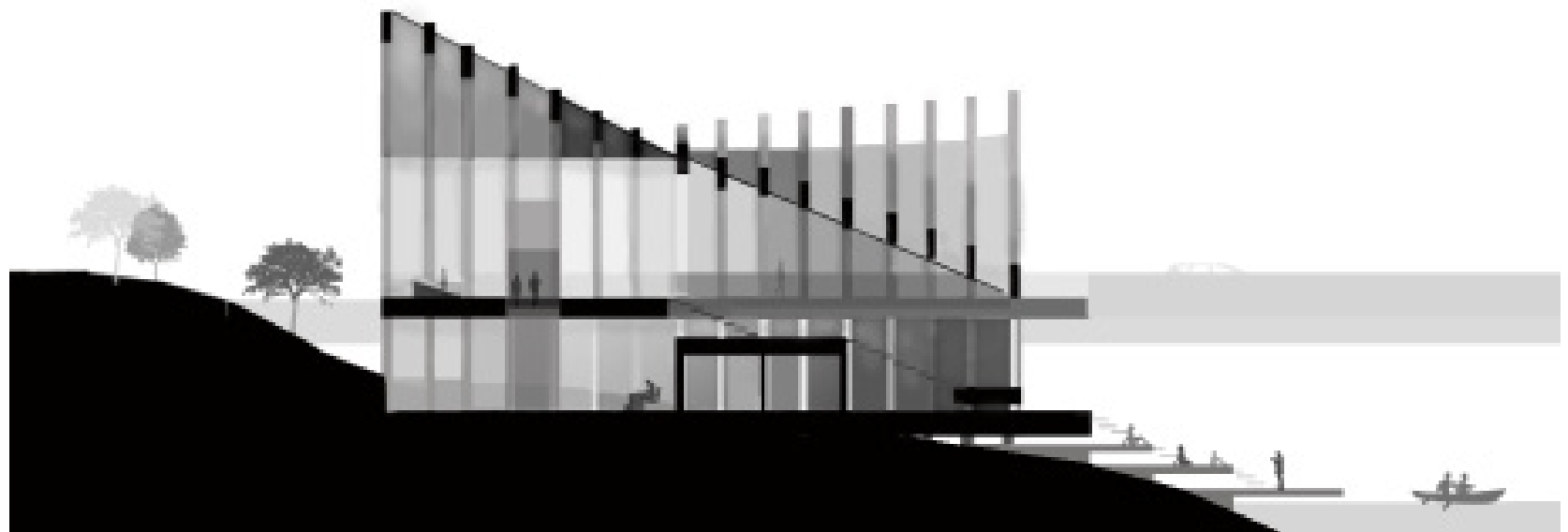


Concept Model





Final Cross Section



Final Longitudinal Section



Exterior Rendering

Exterior Rendering

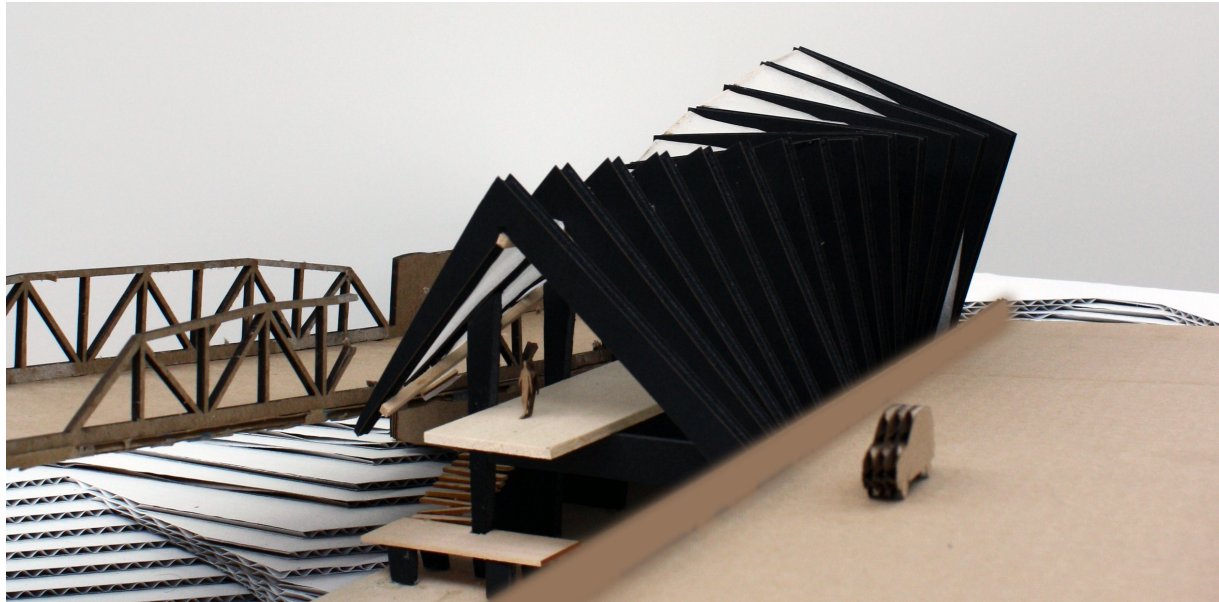
This image is a rendering depicting the gallery as it would appear to a traverser crossing the existing pedestrian bridge which is adjacent to the gallery.

Interior Rendering

This image is a rendering depicting the proposed gallery space which would overlook the boating workshop beneath.



Interior Rendering



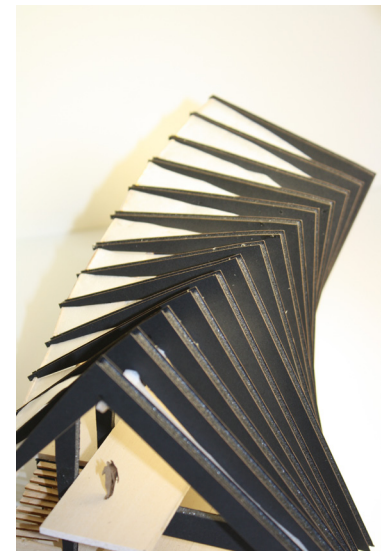
Final Model

Hillside Topography with Final Model

A digital 1/8 scale model was created along with the hillside topography. It was then lasercut and assembled.

Detail shots

The lasercut model accurately depicts the repetitive splay of the building's ribs across both the exterior facade and interior spaces.



Detail shots